

CASE STUDY 02

MACHINE EXTRACTION

HARD ROCK MINE

VICTORIA 2021





SUCCESSFUL HARD ROCK MINE EXTRACTIONS

Since it was developed and released in 2002, the Mine Extraction Device (MED) has extracted hundreds of pieces of buried mining equipment proving itself as a safe, efficient and effective means to recover machines and allow continuance in production. Customer references can be provided on request.

The images in this document were taken during a successful extraction that occurred in an underground mine in Victoria using an MED360 (360T capacity). The buried asset has an estimated weight of more than 70 tonnes.



WARNING: Prior to any extraction it is important to assess all risks and implement the resultant control measures. As conditions change, the risks must be reassessed and new control measures implemented.





1. MED360 is being moved into place following the preparation of a solid and level base before the extraction commences.



2. The MED360 is positioned over the prepared base.



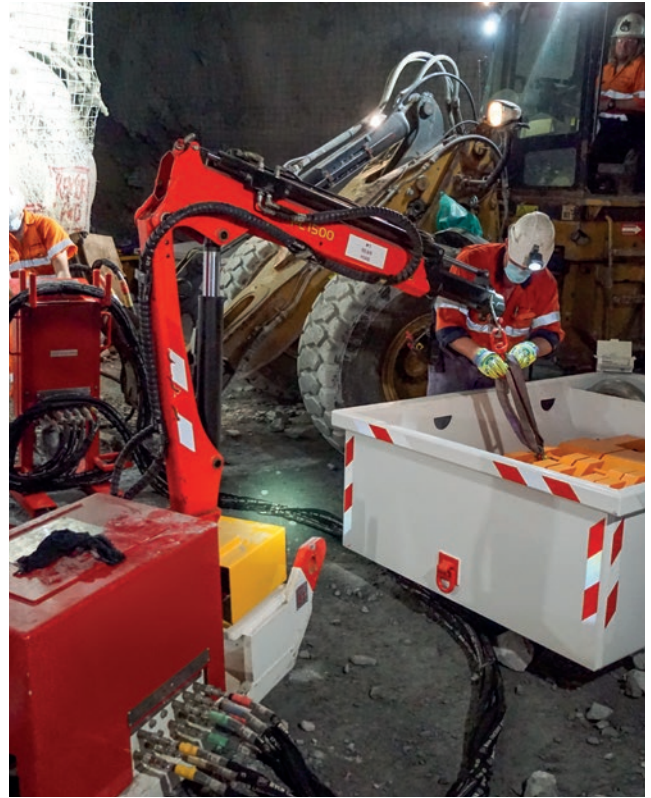
3. The tow slings and other equipment are moved into position.



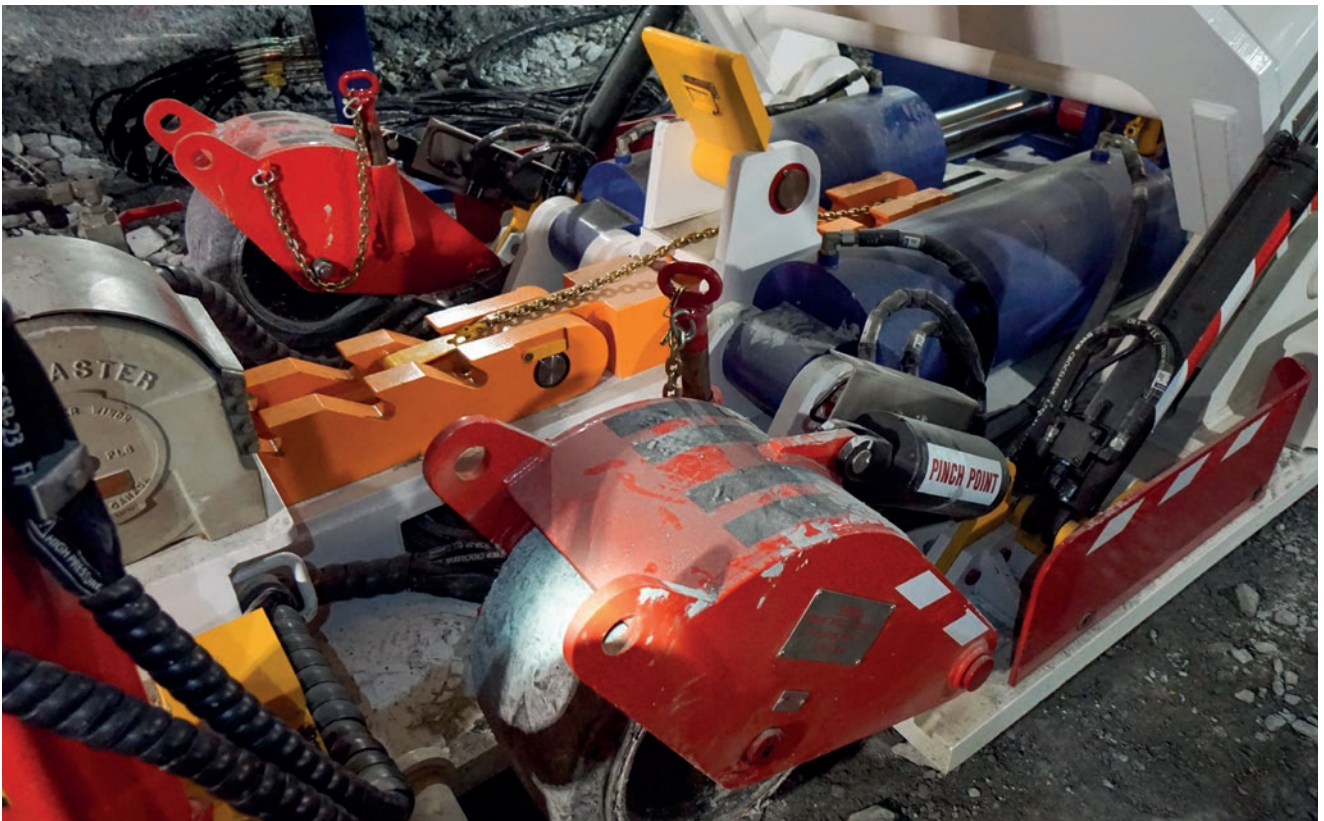
CASE STUDY MACHINE EXTRACTION VICTORIA, AUSTRALIA 2021



4. Correctly rated 'D-shackles' provided with the MED360 are prepared to attached to the buried asset.



5. The engineered racks are lifted into place using the rear Hiab (Hiabs are only available on the MED360).



6. Image of the racks being assembled and pulled through the MED into position using the winch.



CASE STUDY MACHINE EXTRACTION VICTORIA, AUSTRALIA 2021



7. The control station and hydraulic hoses are moved into position and connected. In this case the auxiliary implement controls on an IT loader are used to operate the MED.



8. Boom and head plate positioned into the roof of the tunnel.



9. Racks are being located and pinned together using the front Hiab. (Hiab cranes are only available on the MED360).



10. Tow sling is secured to the buried asset using rated 'D-shackles' and tow slings.



11. Tow slings have been secured to the connecting link.



12. View of the buried asset from the rear of the MED360.



13. The connecting link is secured to the pulling rack using the load pin.



14. The MED360 is ready to commence the bedding in process and subsequent extraction.



15. The tow slings are attached to the 'D-shackles' and readied for the machine extraction.



16. Tension is applied to the tow slings and the extraction process commences.

More Information

If you require further information on the Elphinstone range of MED products, please visit www.elphinstone.com or the contact email addresses provided.

Machine Sales: MEDsales@elphinstone.com

Product Support: MEDproductsupport@elphinstone.com

Part Sales: MEDparts@elphinstone.com

UNDERGROUND RELIABILITY.

Over 45 years' experience in the mining industry.

ELPHINSTONE

MED Extraction Case Study

For more complete information on the Elphinstone MED visit www.elphinstone.com.

Material and specifications are subject to change without notice. Featured machines in photos may include additional equipment.

Elphinstone and their respective logos, as well as corporate and product identity used herein, are trademarks of Elphinstone and may not be used without permission.

© 2023 Elphinstone. All rights reserved.
Made in Australia for export.



SCAN FOR MORE INFORMATION