

# CASE STUDY 01

# MACHINE EXTRACTION

# COPPER MINE

NEW SOUTH WALES, AUSTRALIA 2018



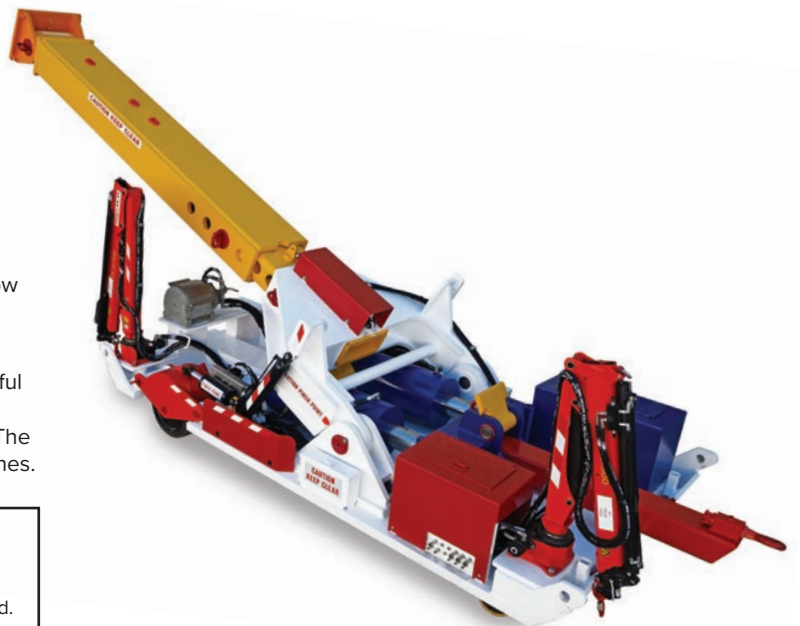




## SUCCESSFUL HARD ROCK MINE EXTRACTIONS

Since it was developed and released in 2002, the Mine Extraction Device (MED) has extracted hundreds of pieces of buried mining equipment proving itself as a safe, efficient and effective means to recover machines and allow continuance in production. Customer references can be provided on request.

The images in this document were taken during a successful extraction that occurred at an underground gold mine in Victoria October 2021 using an MED360 (360T capacity). The buried asset has an estimated weight of more than 70 tonnes.



**WARNING:** Prior to any extraction it is important to assess all risks and implement the resultant control measures. As conditions change, the risks must be reassessed and new control measures implemented.





1. Following the preparation of a solid and level base, an IT loader is used to move the MED210 into place.



2. Now the MED is positioned on a level base, the hydraulic hoses are connected to the auxiliary implement controls on an IT loader.





4. The engineered racks are assembled and pulled through the MED using the winch.



5. The connecting racks are attached to the machine using D-shackles' and slings.





**6.** As the extraction commences, the pressure is applied slowly to the connecting racks and tow sling.



**7.** As the pressure is increased the machine is released from the fallen debris.

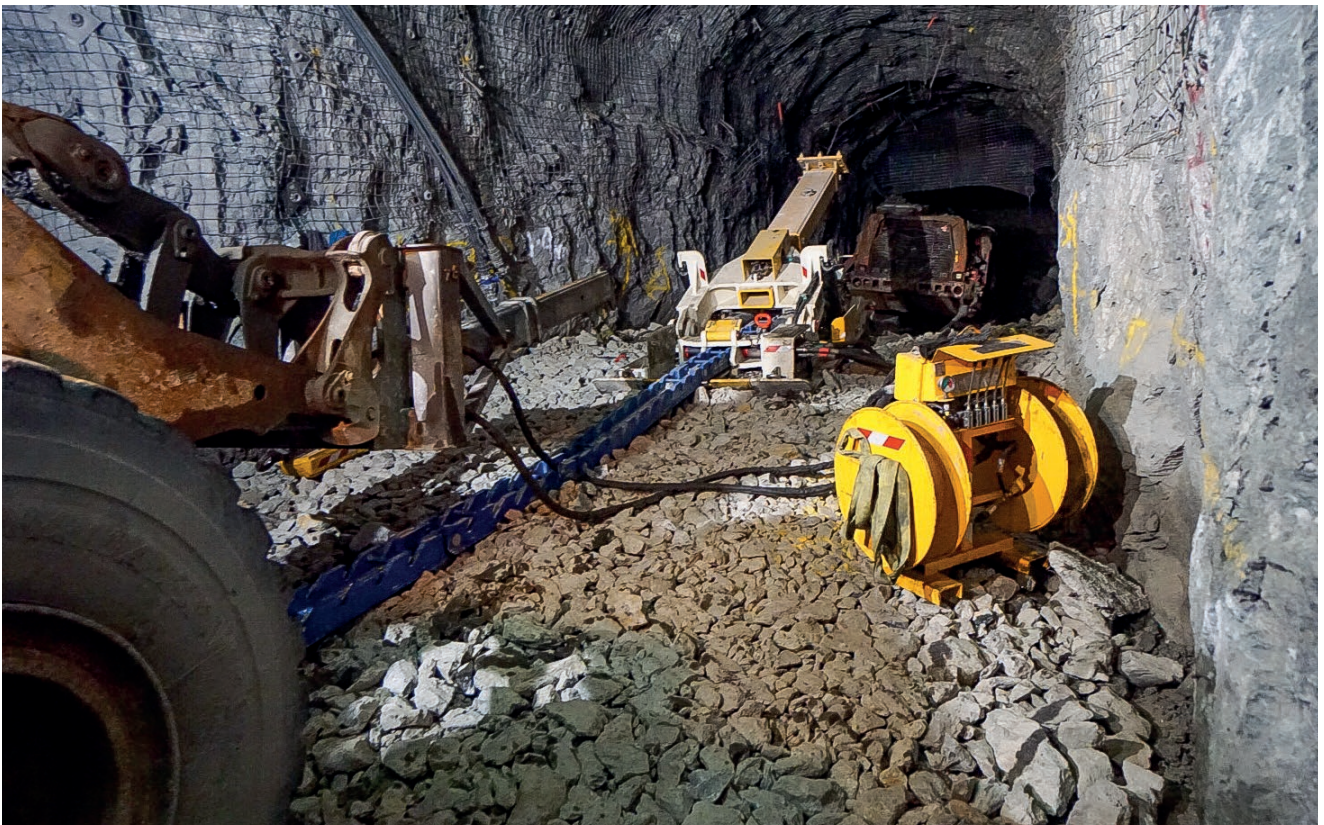


**8.** The MED210 works effortlessly as the machine gently ploughs through the bund.





9. View of the final stages of the extraction.



10. The extraction is managed safely and is now complete.





## CASE STUDY MACHINE EXTRACTION NEW SOUTH WALES, AUSTRALIA 2018

---



### More Information

If you require further information on the Elphinstone range of MED products, please visit [www.elphinstone.com](http://www.elphinstone.com) or the contact email addresses provided.

**Machine Sales:** [MEDsales@elphinstone.com](mailto:MEDsales@elphinstone.com)

**Product Support:** [MEDproductsupport@elphinstone.com](mailto:MEDproductsupport@elphinstone.com)

**Part Sales:** [MEDparts@elphinstone.com](mailto:MEDparts@elphinstone.com)



# UNDERGROUND RELIABILITY.

Over 45 years' experience in the mining industry.

**ELPHINSTONE**

## MED Extraction Case Study

For more complete information on the Elphinstone MED visit [www.elphinstone.com](http://www.elphinstone.com).

Material and specifications are subject to change without notice. Featured machines in photos may include additional equipment.

Elphinstone and their respective logos, as well as corporate and product identity used herein, are trademarks of Elphinstone and may not be used without permission.

© 2023 Elphinstone. All rights reserved.  
Made in Australia for export.



SCAN FOR MORE INFORMATION